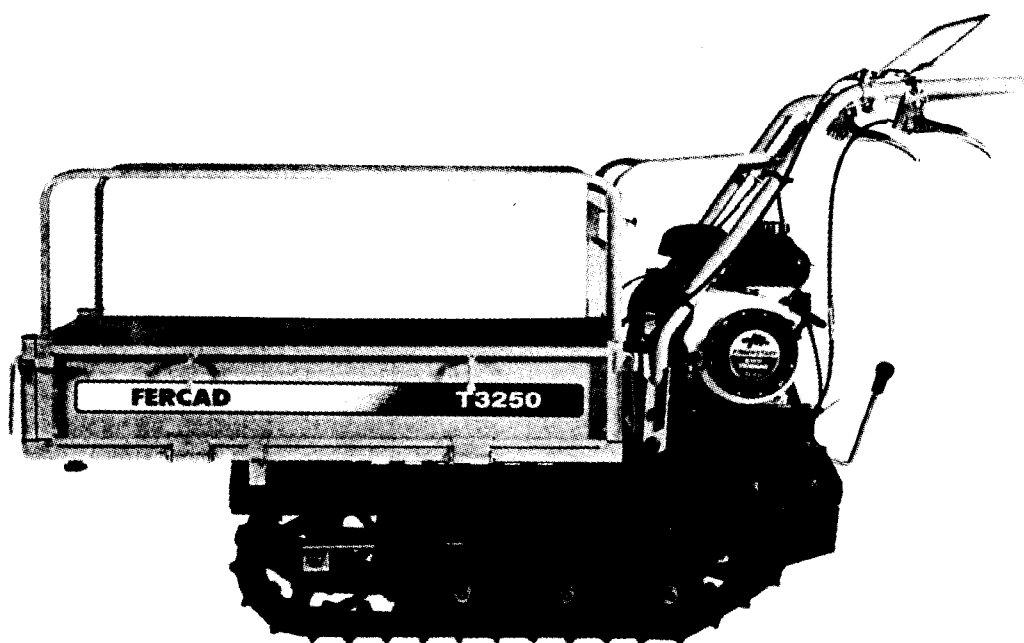


# **YANMAR GASOLINE CARRIER**

# **YANMAR**

## **PARTS CATALOG**



**MODEL**

# **T3250**

---

Published

JAN., 1999

NPC-3659

## YOUR PARTS ORDERING

- When placing your parts order with us, Please contact us upon confirming the Model, Part No, Description and Q'ty of the parts you want to order by this parts catalog.  
First look for the illustration of the part you want. Then you can find out the necessary informations by tracing the illustration No., as each illustration corresponds to the parts list on the following page.
- All parts the illustrations of which are not numbered shall not be sold separately.
- You are asked to prepare parts, especially consumable parts in the demand season earlier, as orders will come with a rush in this season.
- Parts other than those due to misshipping on your part shall not be allowed to returned in principle.
- Please surely use **YANMAR** Genuine Parts in any **YANMAR** Product.  
(Use of similar goods (parts) on the market causes earlier damage or worsening of performance.)

## HOW TO READ THIS PARTS CATALOG

- In the case where a Ref. No. given in the list does not agree with the corresponding Sketch No. in illustration (no suffix number as shown below), an illustration for such a New Part has been omitted only in the case of a parts change for which Interchangeability Symbol N, R or K is given.

[Example]

Sketch No. in Illustration	Ref. No. in List	
1	1	(Before the change)
2	1 <span style="border: 1px dashed black; padding: 2px;">1</span>	(After the change)
2	2	

### 7. Indication and meaning of level Level

- .....A number of dots indicated is called the level which refers to the assembly-component relation of an assembly part.  
(\* refers to an assembly part.)
- .....Refers to a component included in an assembly part indicated by one dot (\*).
- .....Refers to a component included in a complete part indicated by two dots (\*\*).  
(It indicates a sub-component of pertinent assembly part indicated by one dot (\*).)

### 8. Indication and meaning of interchangeability symbol

(Given under the column "I" next to the quantity column in the list)

In the case where a parts change took place, one of the following interchangeability symbols is indicated for that part:

Symbol	Interchangeability	Contents note
N	New  Old	New Part is interchangeable for Old Part but not interchangeable conversely.
P	New  Old	Same as symbol N but supply of Old Part is suspended and New Part is sold in the future.
Q	New  Old	New Part is not interchangeable for Old Part but interchangeable conversely.
R	New  Old	New Part is interchangeable for Old Part and vice versa.
S	New  Old	New Part is not interchangeable for Old Part and vice versa.
W		Part newly added.
Z		Part discontinued.
F		Not interchangeable by single part but interchangeable by set of the related parts.
K		Changed only in quantity used.

- Remarks ..... (column "R" given at the right end of the list)  
9-1) A numerical or alphabetic character (symbol) may be indicated under the column "R".  
9-2) A comment (remarks) for a part in question is given at the lower part of the list, following a symbol identical to the aftermentioned symbol when a symbol is indicated under the column "R".

### 10. Virtual No. in illustration

A Sketch No. in illustration containing an encircled numeral indicates other related Group No.

[Example] indicated.

### 11. Change Effective Machine No.

When a part is changed, a Change Effective Machine No. of such a model for which a New Part is applied is indicated as follows:

[Example] Model columns A ~ F

(Model indication is given in two kinds, namely, 4-model and 6-model indications, correspond to A ~ F in front of Change Effective Machine No..)

4-model Indication

(A) =
(B) =
(C) =
(D) =

6-model Indication

(A) =	(D) =
(B) =	(E) =
(C) =	(F) =

[Example] A=F610001 B=F612001

Model column A indicates that a parts change is put into effect from Machine No. 610001 and on. And moreover Model column B indicates that a parts change is put into effect from Machine No. 612001 and on.

[Classification]

E ..... Engine No.  
F ..... Machine Body No. } indicated.  
R ..... Rotary Unit No.

### 12. Additional Group No. found in the Revised Edition

Kindly understand that a Group No. other than consecutive numbers has been entered in the case where the corresponding Group is added within the pertinent Section.

[Example]

Section

BODY SECTION

Group No. Group name

- 46. ENGINE FIXTURE & BATTERY
- 47. FRAME & HYDRAULIC PUMP
- 48. BEVEL GEAR CASE
- 49. TRANSM. CASE & RUNNING CLUTCH
- 50. CONTROL LEVERS
- 51. CRAWLER

64. ENGINE FIXTURE & BATTERY (Group added for the YSR1300-N)

65. CONTROL LEVERS (Group added for the YSR1300-N)

SNOW REMOVAL SECTION

52. CHUTE

53. SNOW REMOVAL FRAME & BLOWER

Additional Groups are indicated.

Owing to the improvement of **YANMAR** Product involved or its parts, the contents of this Parts Catalog may be altered without prior notice to you.

# CONTENTS

## YOUR PARTS ORDERING

## SPECIFICATIONS

### ENGINE UNIT(GA90E-SCSA)

#### GROUP NO. GROUP NAME

1. CYLINDER BLOCK
2. CYLINDER HEAD & BONNET
3. TOOL & LABEL
4. AIR CLEANER & MUFFLER
5. CRANKSHAFT, PISTON & CAMSHAFT
6. FUEL OIL TANK & FUEL OIL LINE
7. CARBURETOR
8. GOVERNOR & CONTROL DEVICE
9. FLY. MAGNET & STARTING DEVICE

### BODY SECTION

10. FRAME
11. CONTROL SECTION
12. PLATFORM CARRIER

### TRANSMISSION UNIT

13. TRANSMISSION

## PARTS INDEX

## ESPECIFICACIONES

Modelo		T3250
Motore	Modelo	GA90SCSA
	tipo	OHV (4 tempi benzina)
	potenza	3.0/4000
	avviamento	a fune autoavvolgente
Dimensioni	lunghezza mm	1610
	larghezza mm	680
	altezza mm	1015
Peso	Kg.	150
Piattaf. carico dimensioni	lunghezza mm	920/1120
	larghezza mm	615/1050
	altezza	150
Portata max	Kg.	(250) 300
Sollev. pianale	Kg.	manuale
Trasmissione	n.marce.	2 avani + 1 retro
	frizione	a tensione a cinghia
	freno	ad espansione interna
Carro cingolato	appoggio mm	580
	larghezza mm	180
	interasse	440
Tendicingolo		a molla
Velocità	1A	1,7
	2A	3,6
	1R	2,1
	2R	-

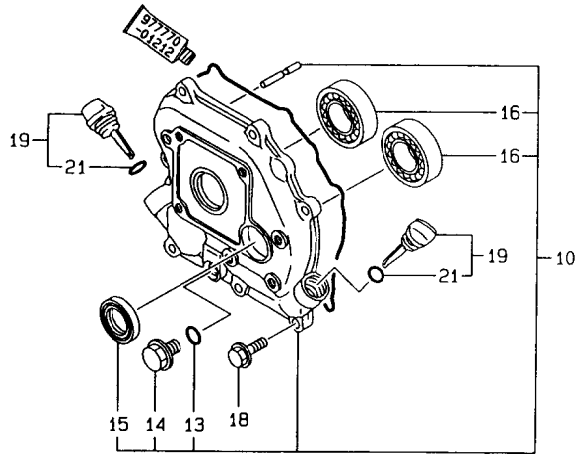
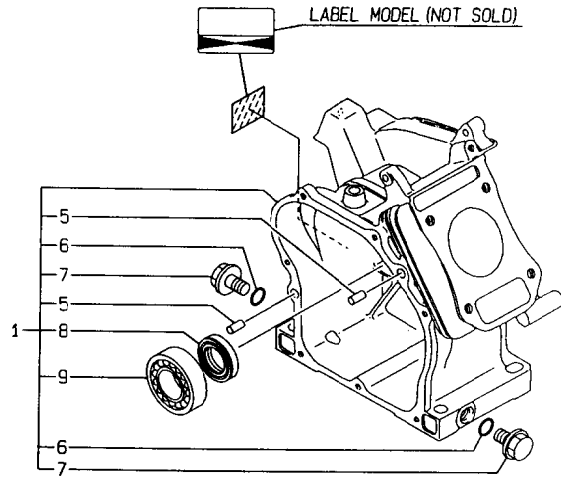
1. CYLINDER BLOCK

1803  
 (1802)  
 NPC-3659

1. CYLINDER BLOCK

98.12.11

(A)=GA90E-SCSA (D)=  
 (B)= (E)=  
 (C)= (F)=



N132435

REF. NO.	LEV. 0	PART NO.	DESCRIPTION	-----Q'TY-----						I	P	U	A	R
				(A)	(B)	(C)	(D)	(E)	(F)					
1	.	760490-01562	BLOCK ASSY, CYLINDER	1										1
5	..	114270-01600	PARALLEL PIN 8X12	2										1
6	..	24311-000100	O-RING 1A P-10.0	2										10
7	..	26106-100162	BOLT M10X 16 PLATED	2										10
8	..	160510-02220	SEAL, OIL	1										1
9	..	24101-062030	BALL BEARING	1										1
10	.	760490-01500	COVER, CRANKCASE	1										1
13	..	24311-000100	O-RING 1A P-10.0	1										10
14	..	26106-100162	BOLT M10X 16 PLATED	1										10
15	..	160510-02220	SEAL, OIL	1										1
16	..	24101-062030	BALL BEARING	2										1
18	.	26476-060202	BOLT M 6X 20, TAPPING	7										10
19	.	160611-01740	CAP ASSY	2										1
21	..	24311-000150	O-RING 1A P-15.0	2										10

(REMARKS) "EFFECTIVE MACHINE NO." OF  
 ENGINE IS INDICATED ON THE  
 ENGINE LABEL WHICH IS SHOWN  
 IN FIG.1.

REMARKS (REMARKS) "EFFECTIVE MACHINE NO." OF  
 ENGINE IS INDICATED ON THE  
 ENGINE LABEL WHICH IS SHOWN  
 IN FIG.1.

N132435

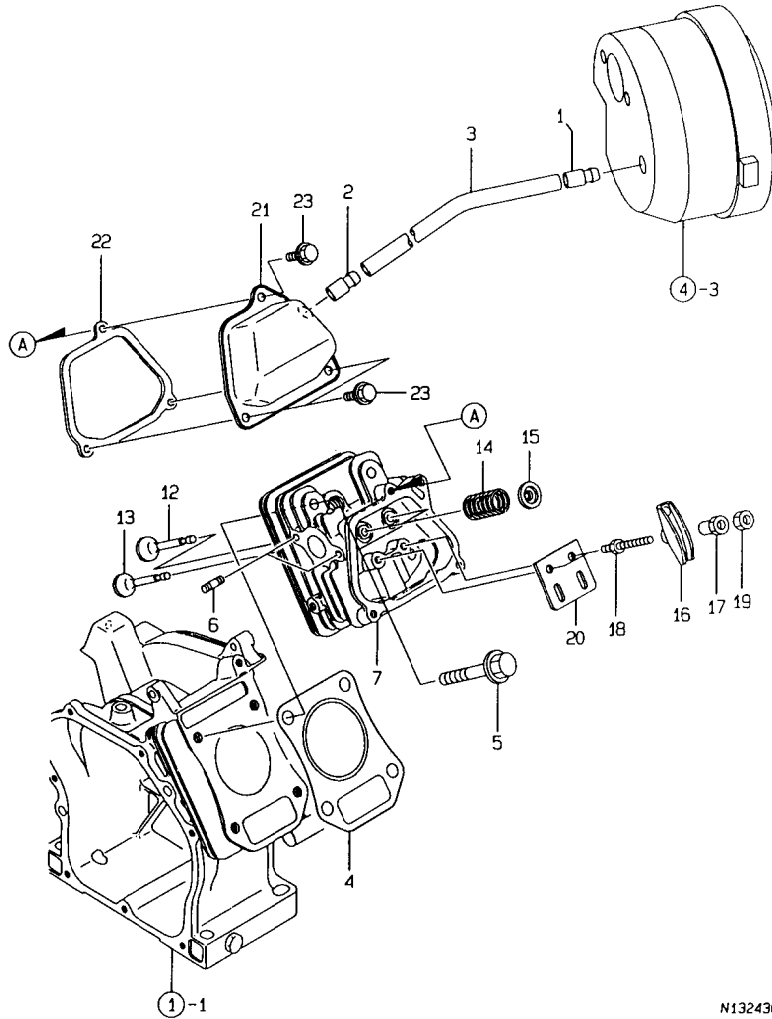
2. CYLINDER HEAD & BONNET

1804  
1802  
NPC-3659

2. CYLINDER HEAD & BONNET

98.12.11

(A)=GA90E-SCSA (D)=  
(B)= (E)=  
(C)= (F)=



N132436

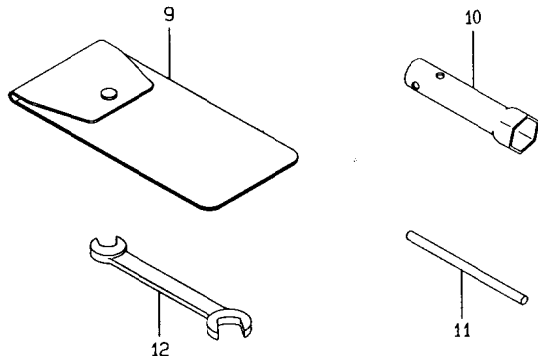
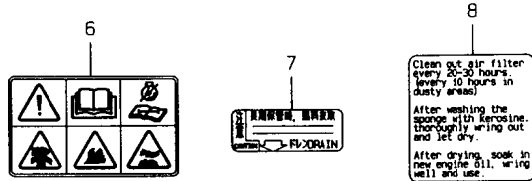
(REMARKS) "EFFECTIVE MACHINE NO." OF  
ENGINE IS INDICATED ON THE  
ENGINE LABEL WHICH IS SHOWN  
IN FIG.1.

REF. NO.	LEV. 0	PART NO.	DESCRIPTION	-----Q'TY-----						I	P/U	A	R
				(A)	(B)	(C)	(D)	(E)	(F)				
1	.	160520-03050	BREATHER.MT.	1								1	
2	.	160610-03050	BREATHER ASSY	1								1	
3	.	160510-03180	PIPE, BREATHER	1								1	
4	.	160498-01330	GASKET, CYL. HEAD	1								1	
5	.	160610-04201	BOLT M 8X 53	4								1	
6	.	160610-04620	BOLT M6X 16	2								1	
7	.	160490-11010	HEAD ASSY, CYLINDER	1								1	
12	.	160664-11100	INLET VALVE	1								1	
13	.	160664-11110	EXHAUST VALVE	1								1	
14	.	160490-11120	SPRING, VALVE	2								1	
15	.	160664-11180	RETAINER, VALVE	2								1	
16	.	160699-11200	ARM, VALVE ROCKER	2								1	
17	.	160690-11221	PIVOT, ROCKER ARM	2								1	
18	.	160690-11271	BOLT	2								1	
19	.	160690-11280	NUT M6X 0.5	2								1	
20	.	160490-11290	GUIDE PLATE	1								1	
21	.	160490-11300	BONNET	1								1	
22	.	160490-11310	GASKET, BONNET	1								1	
23	.	26476-060142	BOLT M 6X 14, TAPPING	3								10	

REMARKS (REMARKS) "EFFECTIVE MACHINE NO." OF  
ENGINE IS INDICATED ON THE  
ENGINE LABEL WHICH IS SHOWN  
IN FIG.1.

N132436

3. TOOL & LABEL



N132437

-----+  
 | (REMARKS) "EFFECTIVE MACHINE NO." OF  
 | ENGINE IS INDICATED ON THE  
 | ENGINE LABEL WHICH IS SHOWN  
 | IN FIG.1.  
 |

98.12.11

3. TOOL & LABEL

(A)=GA90E-SCSA (D)=  
 (B)= (E)=  
 (C)= (F)=

REF. NO.	LEV. 0	PART NO.	DESCRIPTION	-----Q'TY-----						I P/U A R
				(A)	(B)	(C)	(D)	(E)	(F)	
6	.	160991-07260	LABEL	1						1
7	.	160520-07272	LABEL, DRAIN	1						1
8	.	160664-07370	LABEL, AIR CLEANER	1						1
9	.	160110-92610	BAG, TOOL	1						1
10	.	160120-92700	SPANNER, BOX	1						1
11	.	160110-92710	BAR	1						1
12	.	28110-100120	WRENCH 10X12	1						1

-----+  
 | REMARKS |

| (REMARKS) "EFFECTIVE MACHINE NO." OF  
 | ENGINE IS INDICATED ON THE  
 | ENGINE LABEL WHICH IS SHOWN  
 | IN FIG.1.  
 |

N132437

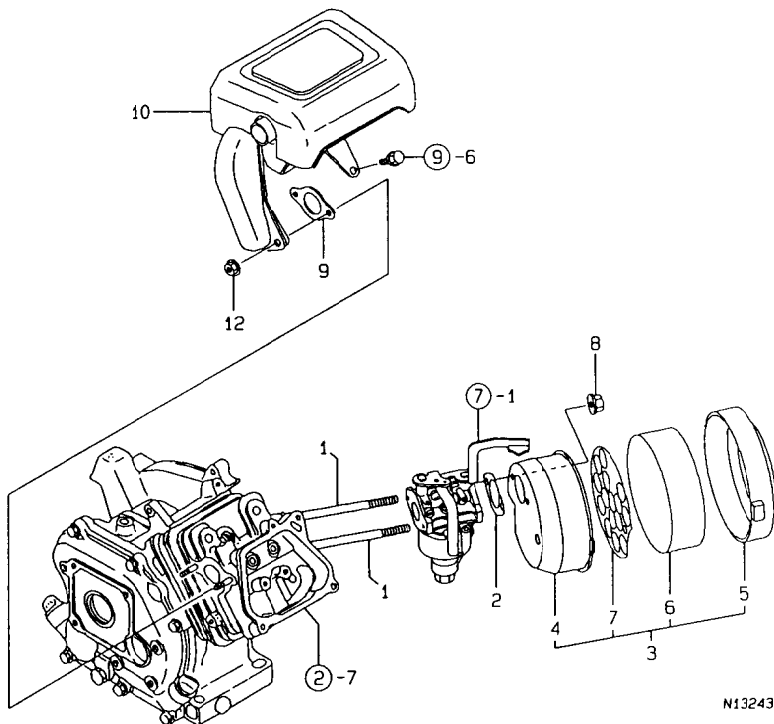
4. AIR CLEANER & MUFFLER

1806  
1802  
NPC-3659

4. AIR CLEANER & MUFFLER

98.12.11

(A)=GA90E-SCSA (D)=  
(B)= (E)=  
(C)= (F)=



N132438

REF. NO.	LEV. 0	PART NO.	DESCRIPTION	-----Q'TY-----						I P/U A R
				(A)	(B)	(C)	(D)	(E)	(F)	
1	.	160610-04570	BOLT M 6X 70	2						1
2	.	160762-12050	GASKET, IN. MANIFOLD	2						1
3	.	160490-12500	CLEANER ASSY, AIR	1						1
4	..	160490-12520	BODY, AIR CLEANER	1						1
5	..	160610-12530	CAP, AIR CLEANER	1						1
6	..	160610-12540	ELEMENT, AIR CLEANER	1						1
7	..	160610-12550	HOLDER, ELEMENT	1						1
8	.	26366-060002	NUT M 6	2						10
9	.	160510-13200	GASKET, MUFFLER	1						1
10	.	160498-13550	MUFFLER ASSY	1						1
12	.	26366-060002	NUT M 6	2						10

-----  
| (REMARKS) "EFFECTIVE MACHINE NO." OF  
|  
| ENGINE IS INDICATED ON THE  
| ENGINE LABEL WHICH IS SHOWN  
| IN FIG.1.  
|

----- REMARKS -----  
| (REMARKS) "EFFECTIVE MACHINE NO." OF  
|  
| ENGINE IS INDICATED ON THE  
| ENGINE LABEL WHICH IS SHOWN  
| IN FIG.1.  
|

N132438



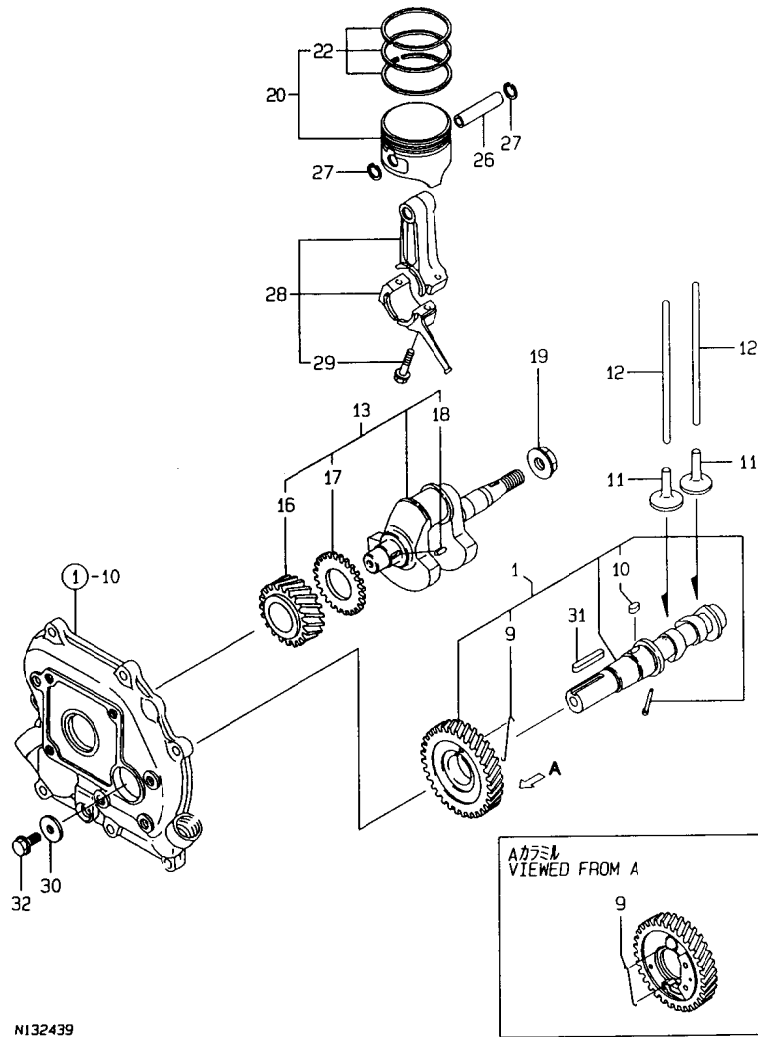
5. CRANKSHAFT, PISTON & CAMSHAFT

1807  
1802  
NPC-3659

5. CRANKSHAFT, PISTON & CAMSHAFT

98.12.11

(A)=GA90E-SCSA (D)=  
(B)= (E)=  
(C)= (F)=



N132439

(REMARKS) "EFFECTIVE MACHINE NO." OF  
ENGINE IS INDICATED ON THE  
ENGINE LABEL WHICH IS SHOWN  
IN FIG.1.

REF. NO.	LEV. 0	PART NO.	DESCRIPTION	Q'TY						I	P	U	A	R
				(A)	(B)	(C)	(D)	(E)	(F)					
1	.	160498-14050	CAMSHAFT ASSY	1										1
9	..	160611-14560	SPRING	1										1
10	..	114250-21290	KEY 4X 7	1										1
11	.	160490-14200	TAPPET	2										1
12	.	160490-14400	ROD, PUSH	2										1
13	.	760490-21700	CRANKSHAFT ASSY	1										1
16	..	160530-21200	GEAR, CRANKSHAFT	1										1
17	..	160590-21210	GEAR, IDLE	1										1
18	..	160610-21290	KEY 4X 10	1										1
19	.	26376-120002	U-NUT M12	1										10
20	.	160490-22010	PISTON ASSY	1										1
22	..	760490-22500	RING SET, PISTON	1										1
26	.	160490-22300	PIN, PISTON	1										1
27	.	22252-000120	CIRCLIP 12	2										10
28	.	160490-23030	ROD ASSY, CONNECTING	1										1
29	..	26106-060302	BOLT M 6X 30 PLATED	2										10
30	.	160510-14550	WASHER	1										1
31	.	160810-21290	KEY 4X24	1										1
32	.	26106-060162	BOLT M 6X 16 PLATED	1										10

REMARKS (REMARKS) "EFFECTIVE MACHINE NO." OF  
ENGINE IS INDICATED ON THE  
ENGINE LABEL WHICH IS SHOWN  
IN FIG.1.

N132439

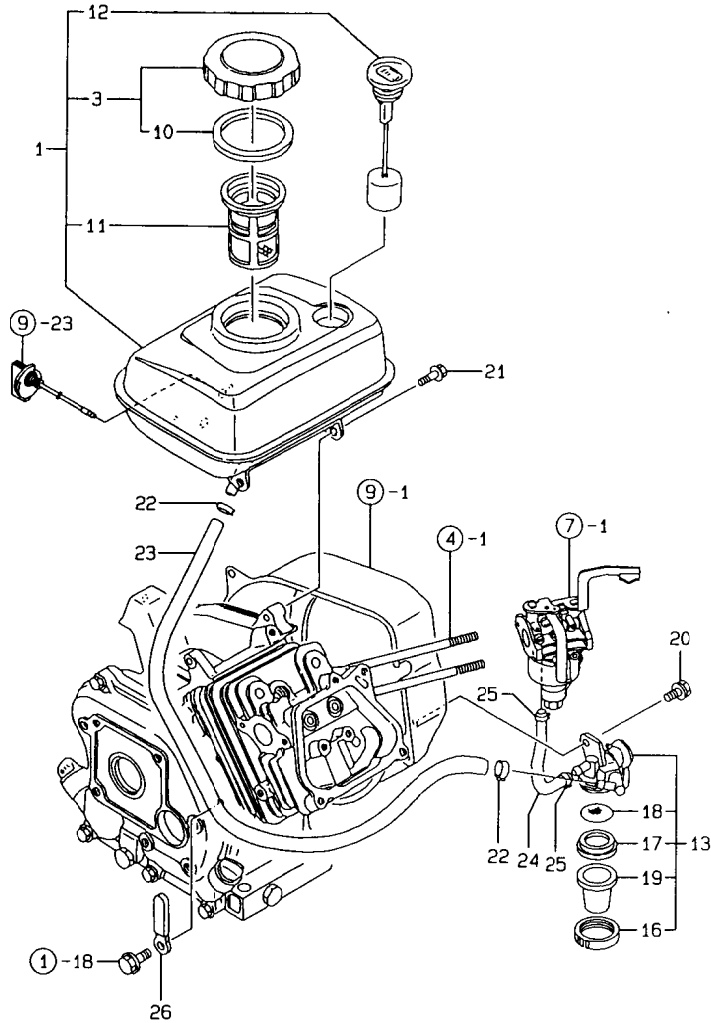
6. FUEL OIL TANK & FUEL OIL LINE

1808  
1802  
NPC-3659

6. FUEL OIL TANK & FUEL OIL LINE

98.12.11

(A)=GA90E-SCSA (D)=  
(B)= (E)=  
(C)= (F)=



N132440

REF. NO.	LEV. O	PART NO.	DESCRIPTION	Q'TY						I	P	U	A	R
				(A)	(B)	(C)	(D)	(E)	(F)					
1	.	760493-55700	TANK, FUEL (RED) (50)	1										1
3	..	160710-55061	CAP ASSY, FUEL TANK	1										1
10	...	160393-55050	GASKET, TANK CAP	1										1
11	..	160610-55100	STRAINER	1										1
12	..	160708-55150	GAUGE, FUEL	1										1
13	.	160692-55300	COCK ASSY, FUEL	1										1
16	..	160710-55360	RING	1										1
17	..	160710-55370	GASKET	1										1
18	..	160710-55382	FILTER	1										1
19	..	160710-55390	BOWL, STRAINER	1										1
20	.	26106-060102	BOLT M 6X 10 PLATED	1										10
21	.	26476-060142	BOLT M 6X 14, TAPPING	3										10
22	.	106990-44660	BAND, HOSE	2										1
23	.	160490-59350	HOSE, FUEL (A-340)	1										1
24	.	160490-59360	HOSE, FUEL (B-145)	1										1
25	.	124060-77680	CLAMP 10	2										1
26	.	160260-78700	CLAMP, CORD	1										1

(REMARKS) "EFFECTIVE MACHINE NO." OF

ENGINE IS INDICATED ON THE  
ENGINE LABEL WHICH IS SHOWN  
IN FIG.1.

REMARKS

(REMARKS) "EFFECTIVE MACHINE NO." OF

ENGINE IS INDICATED ON THE  
ENGINE LABEL WHICH IS SHOWN  
IN FIG.1.

N132440

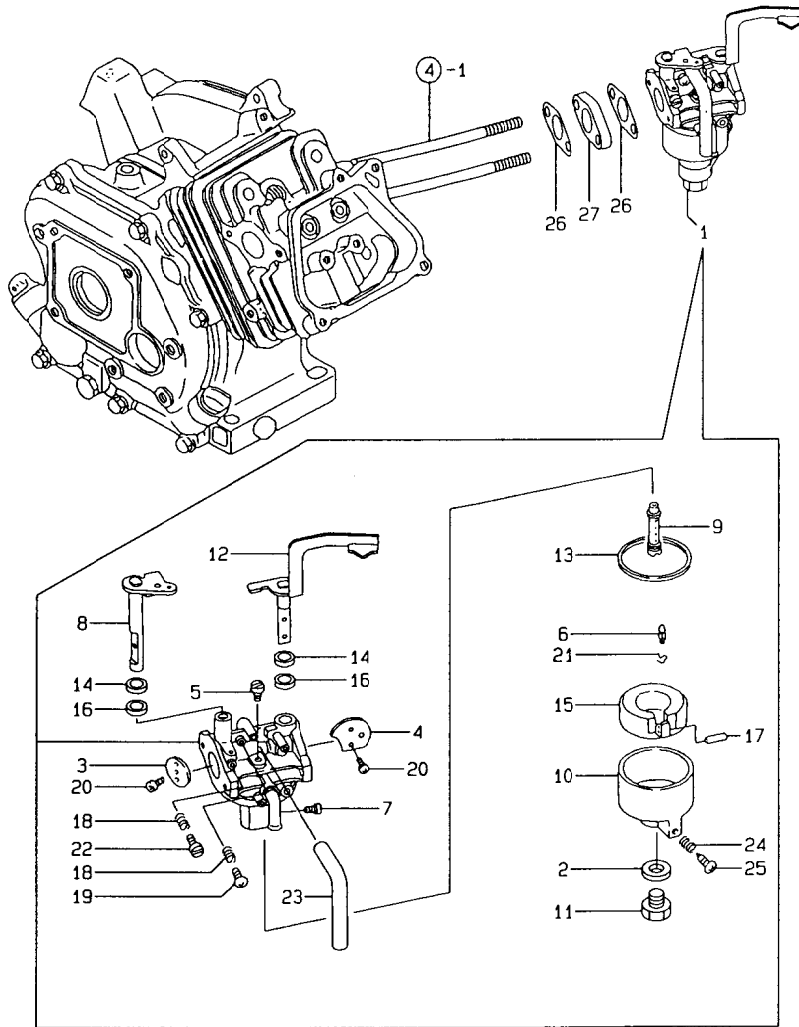
7. CARBURETOR

1809  
1802  
NPC-3659

7. CARBURETOR

98.12.11

(A)=GA90E-SCSA (D)=  
(B)= (E)=  
(C)= (F)=



N132441

REF. NO.	LEV. 0	PART NO.	DESCRIPTION	Q'TY						P/U	A	R
				(A)	(B)	(C)	(D)	(E)	(F)			
1	.	160490-56011	CARBURETOR ASSY	1							1	
2	..	160495-56600	GASKET	1							1	
3	..	160492-56520	VALVE, THROTTLE	1							1	
4	..	160492-56530	VALVE	1							1	
5	..	160492-56540	JET, PILOT	1							1	
6	..	160492-56550	NEEDLE	1							1	
7	..	160495-56561	JET, MAIN	1							1	
8	..	160492-56570	SHAFT ASSY, THROTTLE	1							1	
9	..	160492-56581	NOZZLE, MAIN	1							1	
10	..	160490-56590	BODY, FLOAT	1							1	
11	..	160490-56600	BOLT	1							1	
12	..	160492-56610	SHAFT, CHOKE	1							1	
13	..	160510-56610	GASKET	1							1	
14	..	160492-56620	GASKET	2							1	
15	..	160510-56620	FLOAT ASSY	1							1	
16	..	160492-56630	SEAL	2							1	
17	..	160610-56630	PIN, FLOAT	1							1	
18	..	181130-56640	SPRING	2							1	
19	..	160692-56710	SCREW	1							1	
20	..	160710-56710	SCREW	3							1	
21	..	160769-56720	CLAMP	1							1	
22	..	160667-56750	SCREW, ADJUSTING	1							1	
23	..	160692-56770	HOSE	1							1	
24	..	181230-56380	SPRING	1							1	
25	..	160610-56900	SCREW	1							1	
26	.	160667-56151	GASKET, CARBURETOR	2							1	
27	.	160667-56160	SPACER, CARBURETOR	1							1	

(REMARKS) "EFFECTIVE MACHINE NO." OF

ENGINE IS INDICATED ON THE  
ENGINE LABEL WHICH IS SHOWN  
IN FIG.1.

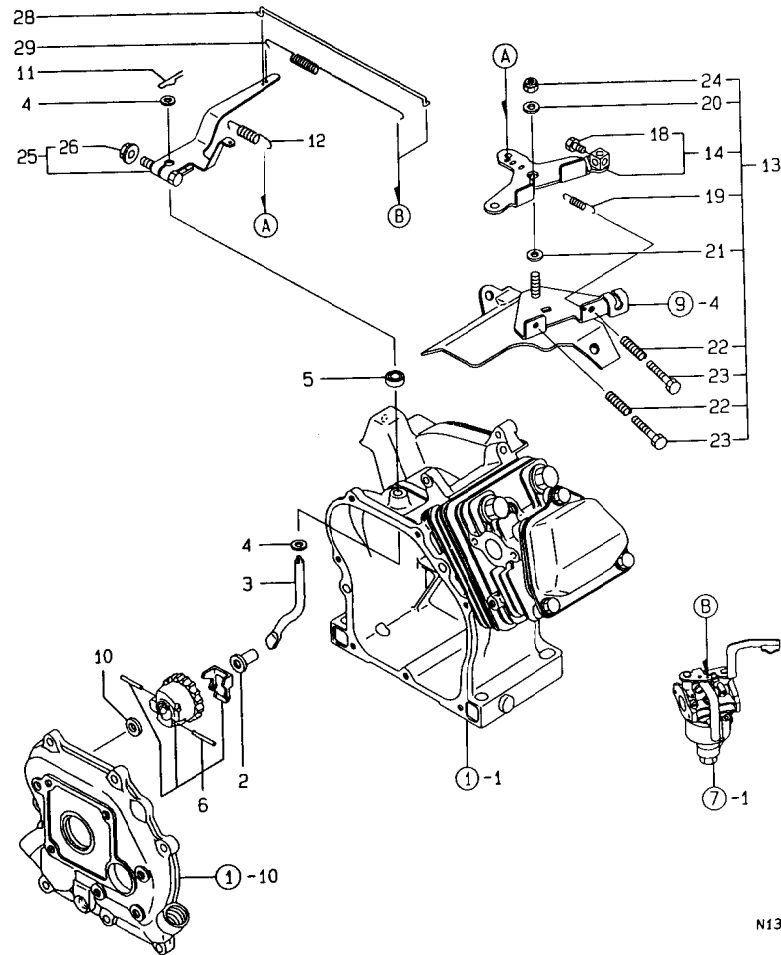
REMARKS

(REMARKS) "EFFECTIVE MACHINE NO." OF

ENGINE IS INDICATED ON THE  
ENGINE LABEL WHICH IS SHOWN  
IN FIG.1.

N132441

8. GOVERNOR & CONTROL DEVICE



N132442

(REMARKS) "EFFECTIVE MACHINE NO." OF  
 ENGINE IS INDICATED ON THE  
 ENGINE LABEL WHICH IS SHOWN  
 IN FIG.1.

8. GOVERNOR & CONTROL DEVICE

98.12.11

1B10  
 (1B02)  
 NPC-3659

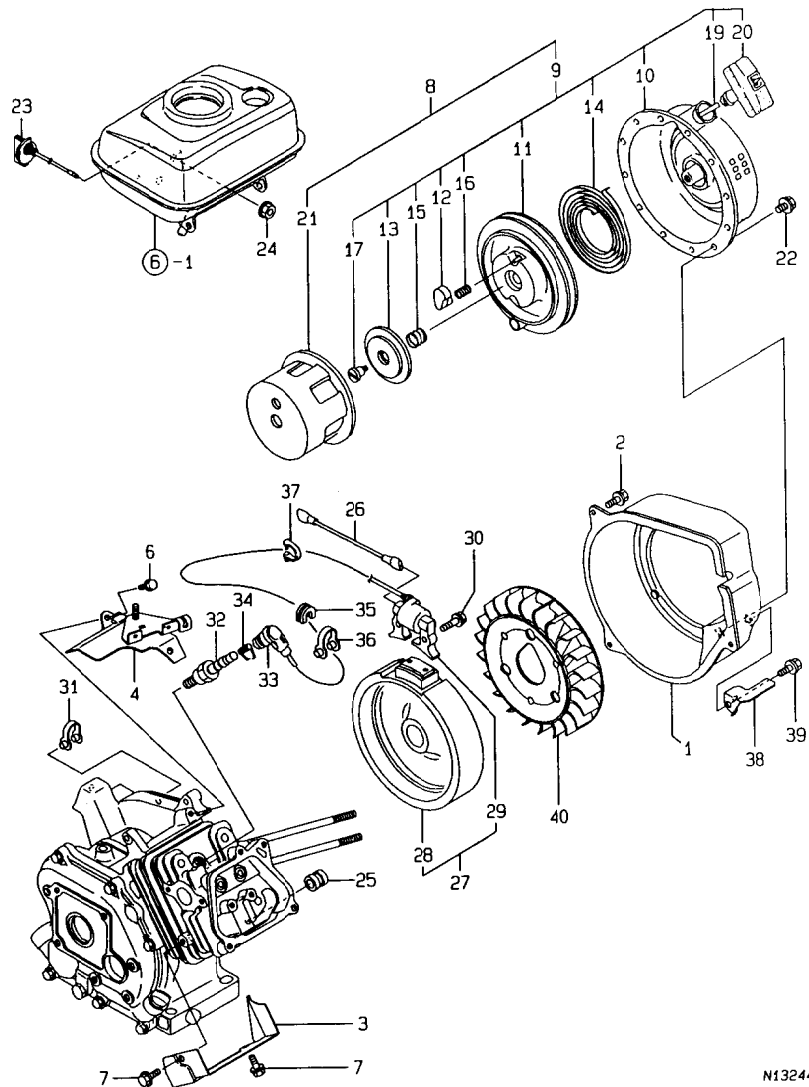
(A)=GA90E-SCSA (D)=  
 (B)= (E)=  
 (C)= (F)=

REF. NO.	LEV. 0	PART NO.	DESCRIPTION	Q'TY						I P/U A R
				(A)	(B)	(C)	(D)	(E)	(F)	
2	.	160690-61301	SPINDLE, GOVERNOR	1						1
3	.	160690-61311	SHAFT, GOV. LEVER	1						1
4	.	160690-61450	WASHER	2						1
5	.	114770-61600	SEAL, OIL	1						1
6	.	160690-61600	GEAR ASSY, GOV.	1						1
10	.	160120-76940	WASHER	1						1
11	.	22372-080000	SNAP PIN (JASO 8)	1						10
12	.	160490-66020	SPRING	1						1
13	.	160492-66100	CONTROL ASSY	1						1
14	..	160692-66051	LEVER ASSY, CONTROL	1						1
18	...	26117-040088	BOLT M 4X 8 PLATED	1						10
19	..	160664-66220	SPRING, RETURN	1						1
20	..	160670-66350	COLLAR	1						1
21	..	160120-76940	WASHER	1						1
22	..	160520-66291	SPRING	2						1
23	..	26117-040257	BOLT M 4X 25	2						10
24	..	26347-060002	U-NUT M 6	1						1
25	.	160490-66190	LEVER, GOVERNOR	1						1
26	..	26366-060002	NUT M 6	1						10
28	.	160490-66200	LINK, THROTTLE	1						1
29	.	160490-66211	SPRING	1						1

REMARKS (REMARKS) "EFFECTIVE MACHINE NO." OF  
 ENGINE IS INDICATED ON THE  
 ENGINE LABEL WHICH IS SHOWN  
 IN FIG.1.

N132442

9. FLY. MAGNET & STARTING DEVICE



N132443

(REMARKS) "EFFECTIVE MACHINE NO." OF

ENGINE IS INDICATED ON THE  
ENGINE LABEL WHICH IS SHOWN  
IN FIG.1.

9. FLY. MAGNET & STARTING DEVICE

98.12.11

1B11  
(1B02)  
NPC-3659

(A)=GA90E-SCSA (D)=  
(B)= (E)=  
(C)= (F)=

REF. NO.	LEV. 0	PART NO.	DESCRIPTION	Q'TY						I	P	U	A	R
				(A)	(B)	(C)	(D)	(E)	(F)					
1	.	160490-45140	CASE, FAN (WHITE:14)	1										1
2	.	26476-060142	BOLT M 6X 14,TAPPING	3										10
3	.	160490-45230	COVER, CYLINDER	1										1
4	.	160490-45220	HEAD, CYLINDER	1										1
6	.	26476-060142	BOLT M 6X 14,TAPPING	2										10
7	.	26476-060142	BOLT M 6X 14,TAPPING	2										10
8	.	160490-76051	STARTER ASSY, RECOIL	1										1
9	..	160490-76251	RE-COIL STARTER	1										1
10	...	160490-76611	CASE ASSY, STARTER	1										1
11	...	160490-76511	REEL	1										1
12	...	160690-76801	RATCHET	2										1
13	...	160690-76531	GUIDE, RATCHET	1										1
14	...	160690-76540	SPRING, SPIRAL	1										1
15	...	160690-76561	SPRING, FRICTION	1										1
16	...	160690-76570	SPRING, RETURN	2										1
17	...	160698-76580	SETScrew	1										1
19	...	160490-76580	ROPE, STARTER	1										1
20	...	160490-76600	Knob, STARTER	1										1
21	..	160490-76591	PULLEY, STARTER	1										1
22	.	26106-060082	BOLT M 6X 8 PLATED	4										10
23	.	160611-77250	SWITCH, STOP	1										1
24	.	26366-080002	NUT M 8	1										10
25	.	160341-01950	PIPE	1										1
26	.	160490-78230	CORD, STOP	1										1
27	.	160490-78090	FLYWHEEL MAGNETO	1										1
28	..	160490-78540	ROTOR	1										1
29	..	160490-78550	COIL, LIGHTING	1										1
30	.	26476-060302	BOLT M 6X 30,TAPPING	2										10
31	.	29610-000650	CLAMP, SPEED 065	2										1
32	.	160793-78010	PLUG, SPARK	1										1
33	.	160700-78040	CAP, PLUG	1										1
34	.	160700-78050	TERMINAL, PLUG	1										1
35	.	160700-78720	GROMMET	1										1
36	.	29610-000950	CLAMP, SPEED 095	1										1
37	.	29610-001400	CLAMP	1										1
38	.	160490-45240	GUIDE, COOLING AIR	1										1
39	.	26476-060142	BOLT M 6X 14,TAPPING	1										10
40	.	160490-45010	FAN, COOLING	1										1

REMARKS

(REMARKS) "EFFECTIVE MACHINE NO." OF

ENGINE IS INDICATED ON THE  
ENGINE LABEL WHICH IS SHOWN  
IN FIG.1.

N132443

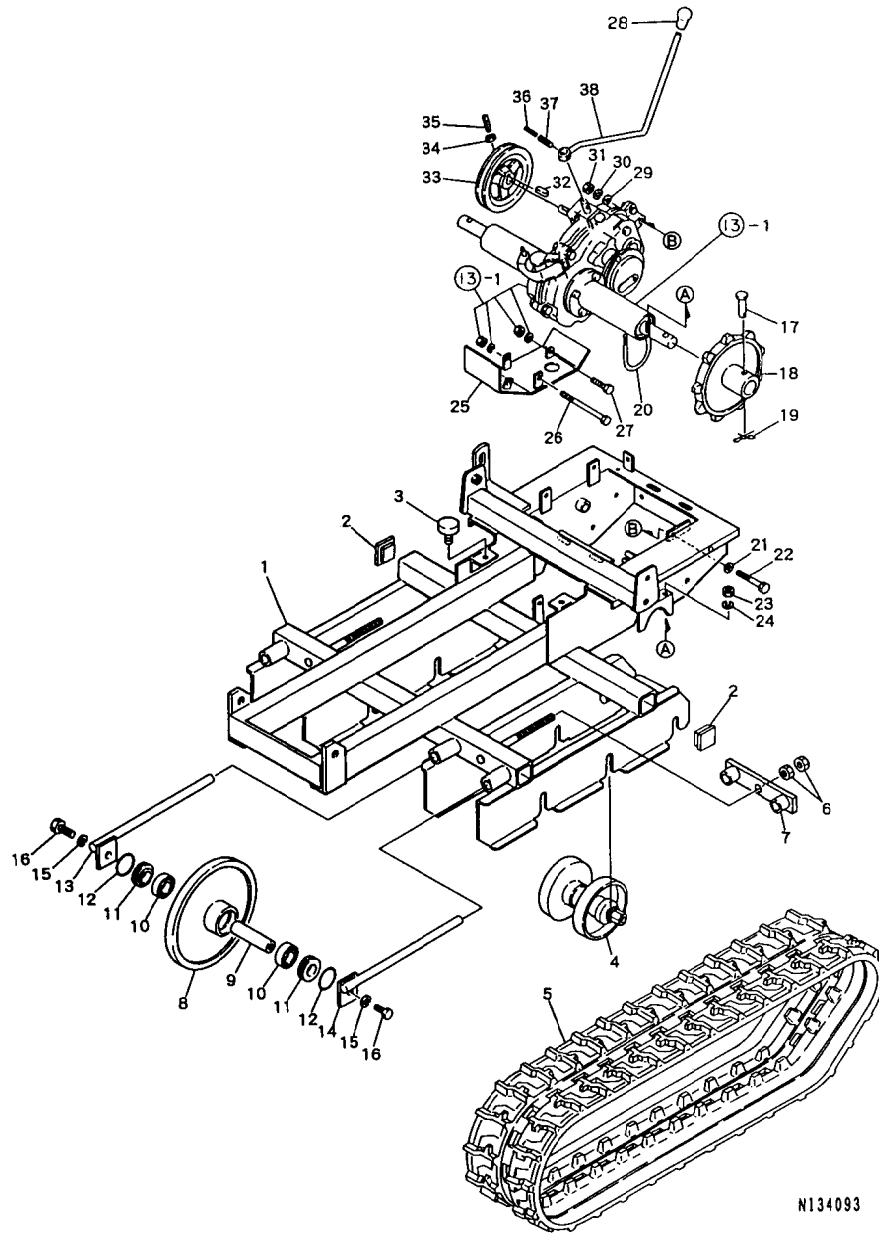
10. FRAME

1C03  
(1C02)  
NPC-3659

10. FRAME

98.12.11

(A)=T3250 (D)=  
(B)= (E)=  
(C)= (F)=

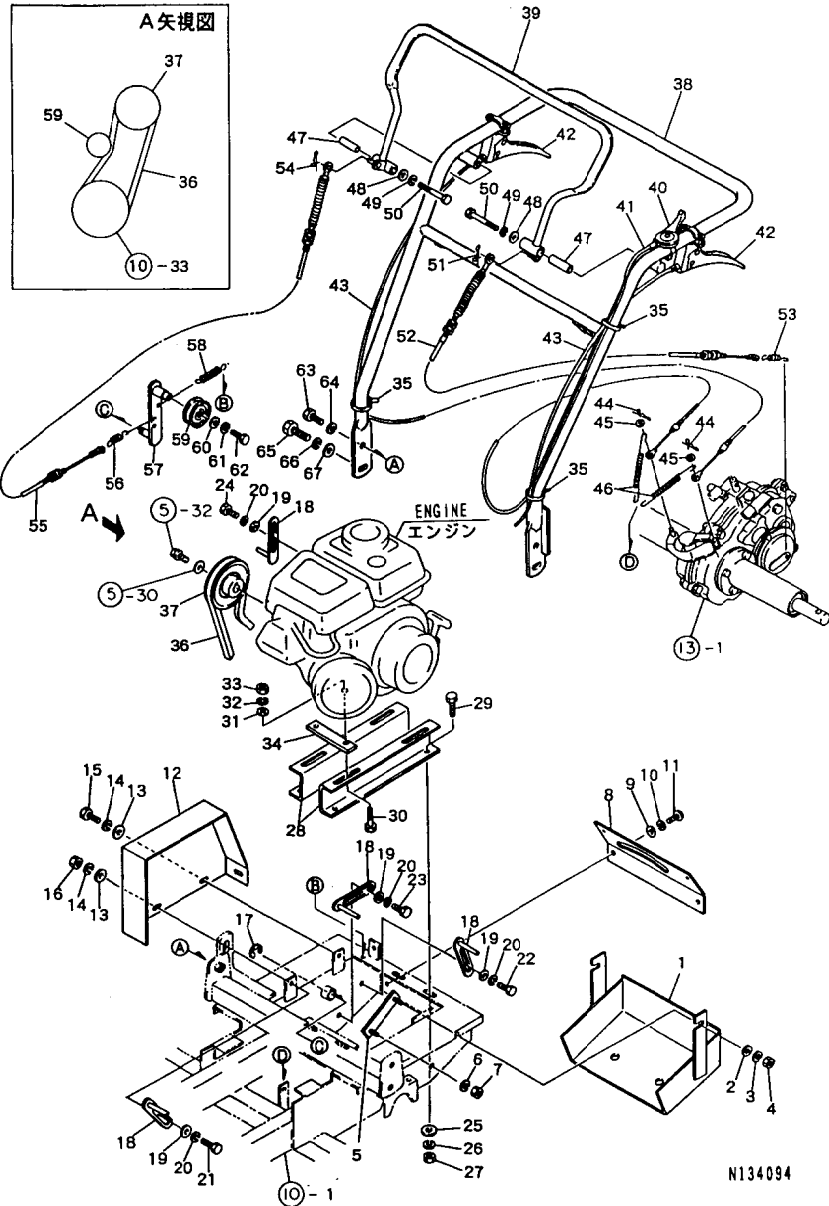


N134093

REF. NO.	LEV. 0	PART NO.	DESCRIPTION	Q'TY						I	P	U	A	R
				(A)	(B)	(C)	(D)	(E)	(F)					
1	.	G41410020000	FRAME	1										
2	.	G46746230100	RUBBER CAP 40X40X3.5	4										
3	.	G46376512000	CUSHION RUBBER	2										
4	.	G40850160100	TRACK ROLLER ASSY	6										
5	.	G46496203000	RUBBER CRAWLER	2										
6	.	G40020100016	NUT M16	4										
7	.	G41400120200	TENSION PLATE	2										
8	.	G41410120000	FRONT IDLER	2										
9	.	G48501081000	SHAFT (FRONT IDLER)	2										
10	.	G4010146005A	BEARING 6005	4										
11	.	G46016511000	DUST COLLAR	4										
12	.	G40052300450	O-RING G-45	4										
13	.	G41500120000	TENSION ROD (R)	2										
14	.	G41500120100	TENSION ROD (L)	2										
15	.	G40027100012	SPRING WASHER M12	4										
16	.	G40010111225	BOLT M12X25	4										
17	.	G40031311055	PIN 10X60	2										
18	.	G41410120100	SPROCKET	2										
19	.	G40031199010	STOPPER PIN 10	2										
20	.	G46492070000	U-BOLT	2										
21	.	G40026100010	PLAIN WASHER M10	2										
22	.	G40100000060	BOLT M10X65	1										
23	.	G40020100008	NUT M8	4										
24	.	G40027100008	SPRING WASHER M8	4										
25	.	G46494950000	PROTECTOR	1										
26	.	G40101008105	BOLT M8X105	2										
27	.	G40100000017	BOLT M8X35	1										
28	.	G46006030000	GRIP 10(BLACK)	1										
29	.	G40026100010	PLAIN WASHER M10	1										
30	.	G40027100010	SPRING WASHER M10	1										
31	.	G40020100010	NUT	1										
32	.	G40300000015	KEY 5X5X20	1										
33	.	G46492300010	PULLEY	1										
34	.	G40020100008	NUT M8	2										
35	.	G40160000830	SET SCREW M8X30	2										
36	.	G40030300325	SPRING PIN 3X25	1										
37	.	G40030300525	SPRING PIN 5X25	1										
38	.	G46492330001	SHIFT LEVER	1										

N134093

11. CONTROL SECTION



-----+  
| 1C04 |  
| (1C02) |  
-----+  
NPC-3659

11. CONTROL SECTION

98.12.11

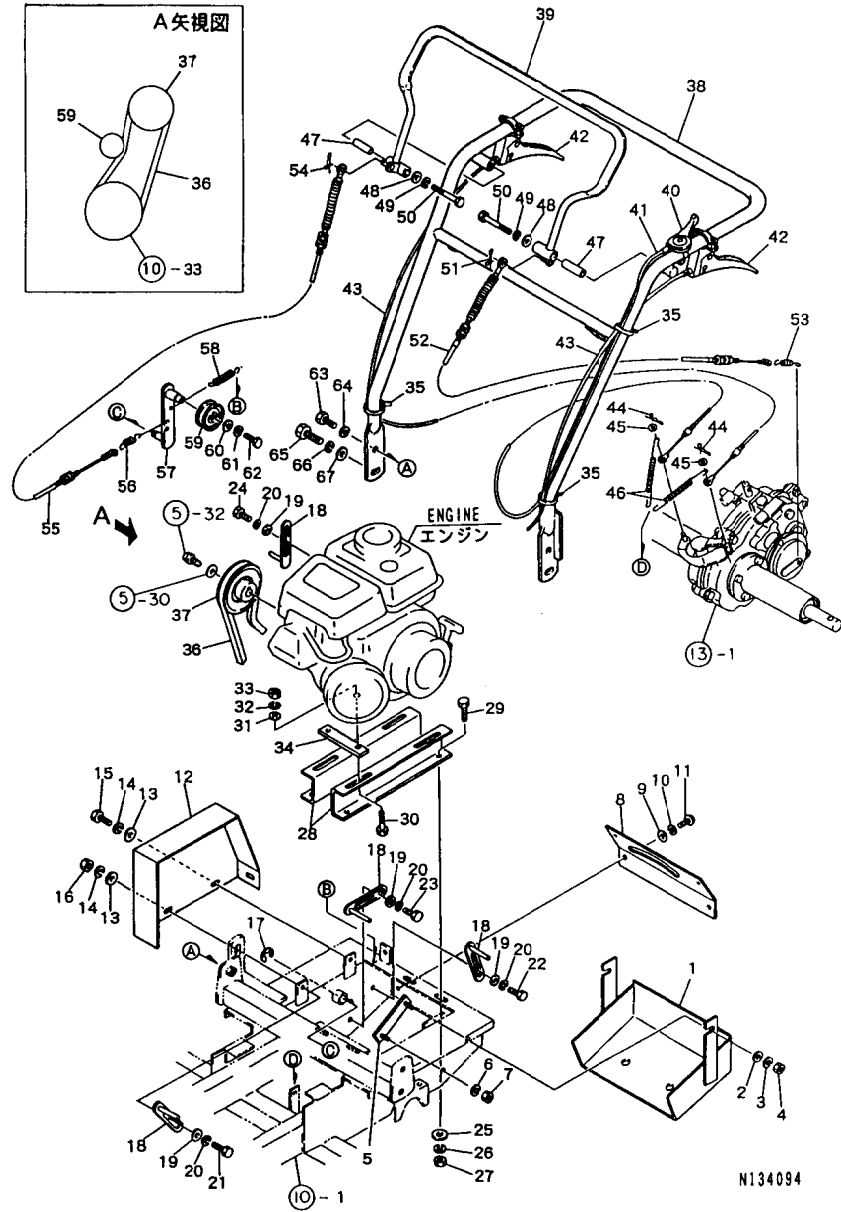
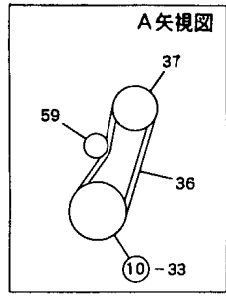
(A)=T3250 (D)=  
(B)= (E)=  
(C)= (F)=

REF. NO.	LEV. 0	PART NO.	DESCRIPTION	Q'TY						I	P	U	A	R
				(A)	(B)	(C)	(D)	(E)	(F)					
1	.	G40701121000	COVER		1									
2	.	G40026100008	PLAIN WASHER M8		2									
3	.	G40027100008	SPRING WASHER M8		2									
4	.	G40020100008	NUT M8		2									
5	.	G40701121100	COVER BOLT		1									
6	.	G40027100008	SPRING WASHER M8		1									
7	.	G40020100008	NUT M8		1									
8	.	G46492650000	SHIFT GUIDE		1									
9	.	G40026100006	PLAIN WASHER M6		4									
10	.	G40027100006	SPRING WASHER M6		4									
11	.	G40160000616	SCREW M6X16		4									
12	.	G41411120000	BELT COVER		1									
13	.	G40026100008	PLAIN WASHER M8		3									
14	.	G40027100008	SPRING WASHER M8		3									
15	.	G40010100816	BOLT M8X16		2									
16	.	G40020100008	NUT M8		1									
17	.	G40036800012	RETAINING RING E12		1									
18	.	G46062370010	BELT STOPPER		4									
19	.	G40026100008	PLAIN WASHER M8		4									
20	.	G40027100008	SPRING WASHER M8		4									
21	.	G40100000015	BOLT M8X25		1									
22	.	G40100000017	BOLT M8X35		1									
23	.	G40010100818	BOLT M8X18		1									
24	.	G40010100816	BOLT M8X16		1									
25	.	G40026100008	PLAIN WASHER M8		4									
26	.	G40027100008	SPRING WASHER M8		4									
27	.	G40020100008	NUT M8		4									
28	.	G46744290150	ENGINE BASE		2									
29	.	G40010100820	BOLT M8X20		4									
30	.	G40010100845	BOLT M8X45		4									
31	.	G40026100008	PLAIN WASHER M8		4									
32	.	G40027100008	SPRING WASHER M8		4									
33	.	G40020100008	NUT M8		4									
34	.	G46012720000	PLATE		2									
35	.	G40329060000	CLAMP WIRE		5									
36	.	G40080300035	V-BELT		1									
37	.	G41412220000	ENGINE PULLEY		1									
38	.	G41416020000	HANDLE		1									
39	.	G41416020100	TRACTION LEVER		1									
40	.	G46666132000	THROTTLE LEVER		1									
41	.	G46066043000	WIRE		1									
42	.	G46496130000	SIDE CLUTCH LEVER		2									
43	.	G46496040022	WIRE		2									
44	.	G40031199006	PIN 6,STPRD.STRAIGHT		2						1			
45	.	G40026100006	PLAIN WASHER M6		2									
46	.	G46062104010	SPRING		2									
47	.	G41416020200	COLLAR		2									
48	.	G47022200010	WASHER 22X9X1.6		2									
49	.	G40027100008	SPRING WASHER M8		2									
50	.	G40010100865	BOLT M8X65		2									
51	.	G40031199006	PIN 6,STPRD.STRAIGHT		1							1		
52	.	G46496040600	WIRE		1									
53	.	G46172105000	SPRING		1									
54	.	G40031199006	PIN 6,STPRD.STRAIGHT		1								1	

\*\* CONTINUE \*\*

N134094

11. CONTROL SECTION



1C05  
(1C02)  
NPC-3659

11. CONTROL SECTION

98.12.11

(A)=T3250 (D)=  
(B)= (E)=  
(C)= (F)=

REF. NO.	LEV. 0	PART NO.	DESCRIPTION	-----Q'TY-----						I P/U A R
				(A)	(B)	(C)	(D)	(E)	(F)	
55	.	G46496040600	WIRE							1
56	.	G46172105000	SPRING							1
57	.	G46492280000	TRACTION TENSION ARM							1
58	.	G46492100000	SPRING							1
59	.	G46066110000	TENSION PULLEY							1
60	.	G46066070000	WASHER 16X7X1.6							1
61	.	G40027100006	SPRING WASHER M6							1
62	.	G40010100612	BOLT M6X12							1
63	.	G40010101025	BOLT M10X25							2
64	.	G40027100010	SPRING WASHER M10							2
65	.	G40010101225	BOLT M12X25							2
66	.	G40027100012	SPRING WASHER M12							2
67	.	G40026100012	PLAIN WASHER M12							2

N134094

N134094



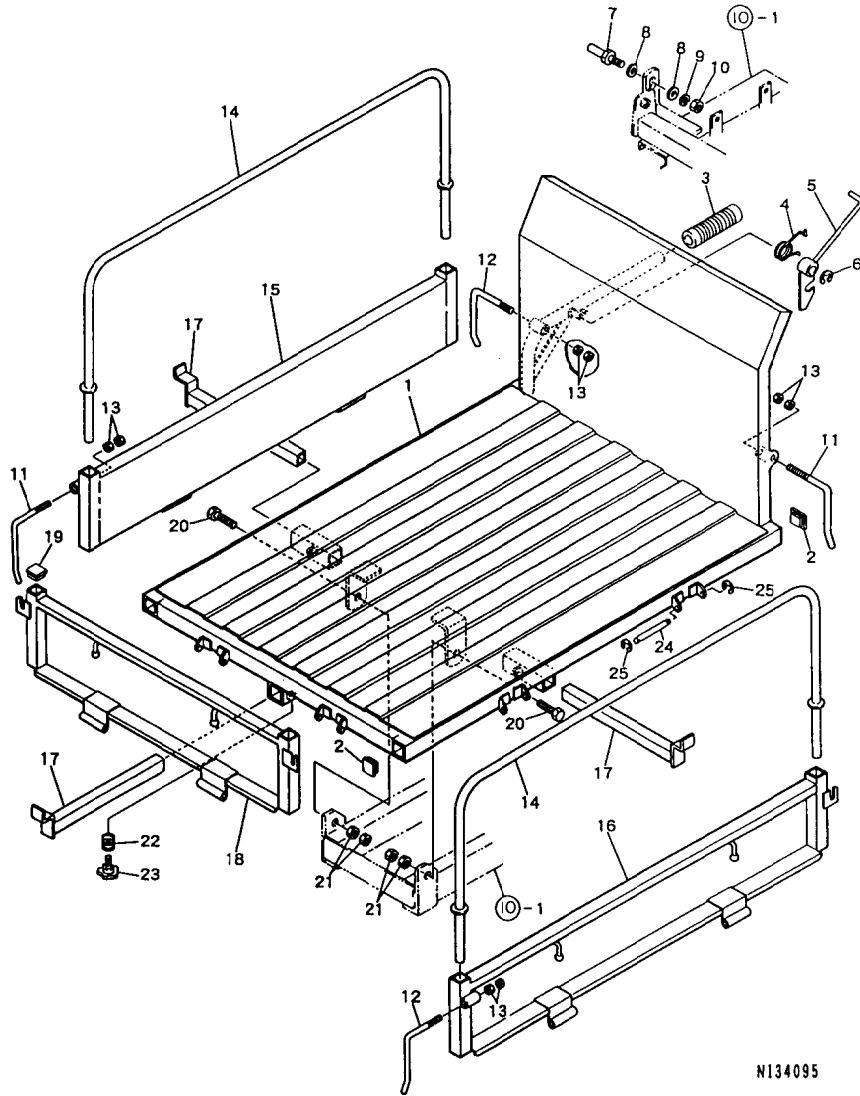
12. PLATFORM CARRIER

1006  
1002  
NPC-3659

12. PLATFORM CARRIER

98.12.11

(A)=T3250 (D)=  
(B)= (E)=  
(C)= (F)=

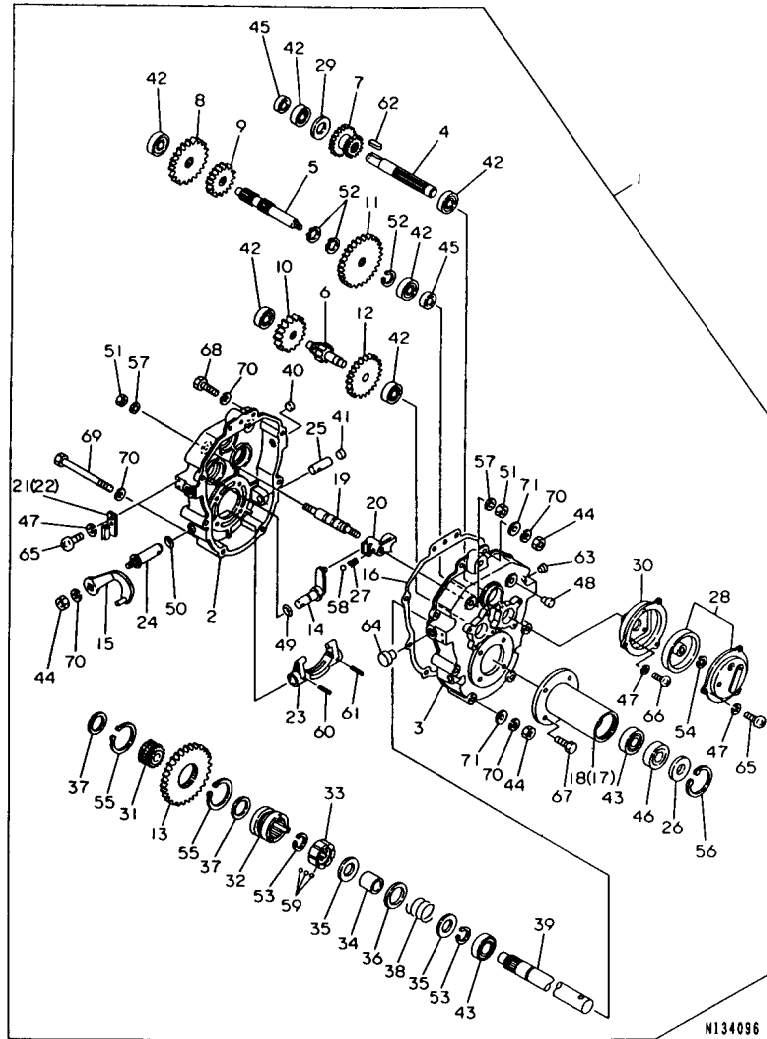


REF. NO.	LEV. 0	PART NO.	DESCRIPTION	Q'TY						I	P	U	A	R
				(A)	(B)	(C)	(D)	(E)	(F)					
1	.	G41415220000	LOADING PALLET	1										
2	.	G40705260000	CAP 32X32X1.6	4										
3	.	G47276030000	GRIP 25.4(BLACK)	1										
4	.	G46062104040	SPRING	1										
5	.	G46062393000	DUMP HOOK LEVER	1										
6	.	G40036800012	RETAINING RING E12	1										
7	.	G46062070010	DUMP HOOK BOLT	1										
8	.	G40026100012	PLAIN WASHER M12	2										
9	.	G40027100012	SPRING WASHER M12	1										
10	.	G40020100012	NUT M12	1										
11	.	G46062392010	SIDE DOOR HOOK	2										
12	.	G46062392000	SIDE DOOR HOOK	2										
13	.	G40020100010	NUT M10	8										
14	.	G40725221100	SIDE DOOR PIPE	2										
15	.	G41415220100	SIDE DOOR (R)	1										
16	.	G41415220200	SIDE DOOR (L)	1										
17	.	G41415220400	STOPPER	3										
18	.	G41415220300	FRONT DOOR	1										
19	.	G40725260000	CAP 25X25X1.6	2										
20	.	G40010111445	BOLT M14X45	2										
21	.	G40020100014	NUT M14	4										
22	.	G40905220400	SPRING	3										
23	.	G40905260000	KNOB BOLT M8X20	3										
24	.	G40855220400	PIN	6										
25	.	G40036500006	RETAINING RING E6	12										

N134095

N134095

13. TRANSMISSION



1C08  
1C07  
NPC-3659

13. TRANSMISSION

98.12.11

(A)=T3250 (D)=  
(B)= (E)=  
(C)= (F)=

REF. NO.	LEV. 0	PART NO.	DESCRIPTION	-----Q'TY-----						I P U A R
				(A)	(B)	(C)	(D)	(E)	(F)	
1	.	G46496011002	TRANSMISSION ASSY	1						
2	..	G46496990000	CASE R, TRANSMISSION	1						
3	..	G46496990010	CASE L, TRANSMISSION	1						
4	..	G46496990020	SHAFT	1						
5	..	G46496990030	SHAFT, 2ND	1						
6	..	G46496990040	SHAFT, PINION 8T	1						
7	..	G46496990050	SLIDE GEAR 12T/20T	1						
8	..	G46496990060	GEAR 35T	1						
9	..	G46496990070	GEAR 25T	1						
10	..	G46496990080	GEAR 30T	1						
11	..	G46496990090	GEAR (F 43T	1						
12	..	G46496990100	GEAR (R 43T	1						
13	..	G46496990110	GEAR 50T	1						
14	..	G46496990120	LEVER, SHIFT	1						
15	..	G46496990130	LEVER, SIDE CLUTCH	2						
16	..	G46496990140	PACKING, GEAR BOX	1						
17	..	G46496990150	CASE R, AXLE	1						
18	..	G46496990160	CASE L, AXLE	1						
19	..	G46496990170	SHIFTER ROD	1						
20	..	G46496990180	SHIFTER, GEAR	1						
21	..	G46496990190	WIRE METAL (R	1						
22	..	G46496990200	WIRE METAL (L	1						
23	..	G46496990210	SHIFT LEVER	2						
24	..	G46496990220	LEVER, SHIFT UPGR	2						
25	..	G46496990230	LEVER, SHIFT LOWR	2						
26	..	G46496990240	COVER, OIL SEAL	2						
27	..	G46496990250	SPRING, SHIFT FORK	1						
28	..	G46496990260	BRAKE ASSY	1						
29	..	G46496990270	SPACER	1						
30	..	G46496990280	MOUNT, BRAKE	1						
31	..	G46496990290	BOSS, SPLINE	1						
32	..	G46496990300	SIDE CLUTCH	2						
33	..	G46496990310	GUIDE, BALL	2						
34	..	G46496990320	COLLR	2						
35	..	G46496990330	COLLR 1	4						
36	..	G46496990340	SPRING SHOE	2						
37	..	G46496990350	COLLR 2	2						
38	..	G46496990360	SPRING, SIDE CLUTCH	2						
39	..	G46496990370	SHAFT	2						
40	..	G46496990380	BLINDED TAP 15	2						
41	..	G46496990390	BLINDED TAP	2						
42	..	G40040106202	BALL BEARING 6202	6						
43	..	G40040106005	BALL BEARING 6005	4						
44	..	G40020100008	NUT M8	10						
45	..	G46496990400	OIL SEAL TC153007	2						
46	..	G46496990410	OIL SEAL TC254708	2						
47	..	G40027100006	SPRING WASHER M6	11						
48	..	G46496990440	BLINDED TAP 10	2						
49	..	G40052100110	O-RING P11	1						
50	..	G40052100140	O-RING P14	1						
51	..	G40020300010	NUT M10	2						
52	..	G40036100019	RETAINING RING S19	3						
53	..	G40036100025	RETAINING RING S25	4						
54	..	G40036100014	RETAINING RING S14	1						

\*\* CONTINUE \*\*

N134096

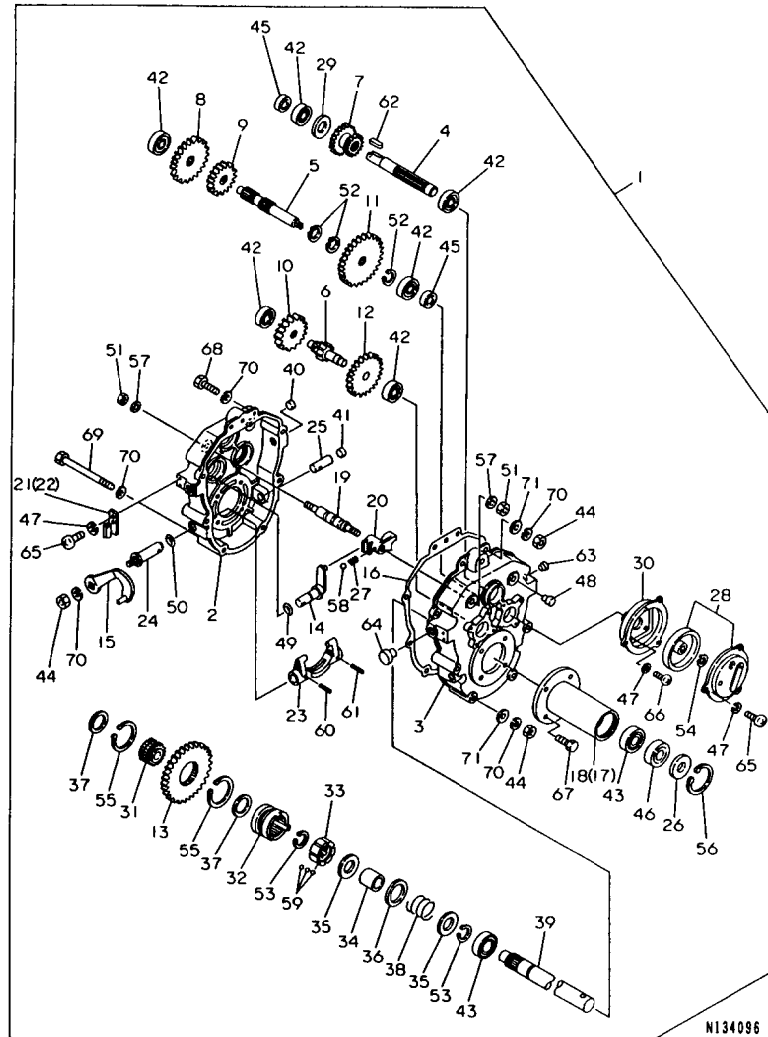
13. TRANSMISSION

1C09  
1C07  
NPC-3659

13. TRANSMISSION

98.12.11

(A)=T3250 (D)=  
(B)= (E)=  
(C)= (F)=



REF. NO.	LEV. 0	PART NO.	DESCRIPTION	-----Q'ITY----- I P/U A R					
				(A)	(B)	(C)	(D)	(E)	(F)
55	..	G40036100045	RETAINING RING S45	2					
56	..	G46496990450	RETAINING RING H47	2					
57	..	G40025100010	WASHER, SEAL 10	2					
58	..	G40048109998	BALL 8, STEEL	1					
59	..	G40048109994	BALL 4, STEEL	30					
60	..	G40030300520	SPRING PIN 5X20	2					
61	..	G40030300420	SPRING PIN 4X20	2					
62	..	G40300000015	KEY 5X5X20	1					
63	..	G46496990460	PLUG	1					
64	..	G46496990470	PLUG, OIL 15	1					
65	..	G40015100610	SCREW M6X10	7					
66	..	G40015100615	SCREW M6X15	4					
67	..	G40010100820	BOLT M8X20	8					
68	..	G40100000016	BOLT M8X30	4					
69	..	G40010100895	BOLT M8X95	4					
70	..	G40027100008	SPRING WASHER M8	18					
71	..	G40026100008	PLAIN WASHER M8	18					

PART NO.	GRP. NO.	REF. NO.	LOC. NO.	PART NO.	GRP. NO.	REF. NO.	LOC. NO.	PART NO.	GRP. NO.	REF. NO.	LOC. NO.	PART NO.	GRP. NO.	REF. NO.	LOC. NO.
G40010100612	11	62	1C05	G40027100010	10	30	1C03	G41411120000	11	12	1C04	G46496990130	13	15	1C08
G40010100816	11	15	1C04		11	64	1C05	G41412220000	11	37	1C04	G46496990140	13	16	1C08
		24	1C04	G40027100012	10	15	1C03	G41415220000	12	1	1C06	G46496990150	13	17	1C08
G40010100818	11	23	1C04		11	66	1C05	G41415220100	12	15	1C06	G46496990160	13	18	1C08
G40010100820	11	29	1C04		12	9	1C06	G41415220200	12	16	1C06	G46496990170	13	19	1C08
		13	1C09	G40030300325	10	36	1C03	G41415220300	12	18	1C06	G46496990180	13	20	1C08
G40010100845	11	30	1C04	G40030300420	13	61	1C09	G41415220400	12	17	1C06	G46496990190	13	21	1C08
G40010100865	11	50	1C04	G40030300520	13	60	1C09	G41416020000	11	38	1C04	G46496990200	13	22	1C08
G40010100895	13	69	1C09	G40030300525	10	37	1C03	G41416020100	11	39	1C04	G46496990210	13	23	1C08
G40010101025	11	63	1C05	G40031199006	11	44	1C04	G41416020200	11	47	1C04	G46496990220	13	24	1C08
G40010101225	11	65	1C05			51	1C04	G41500120000	10	13	1C03	G46496990230	13	25	1C08
G40010111225	10	16	1C03			54	1C04	G41500120100	10	14	1C03	G46496990240	13	26	1C08
G40010111445	12	20	1C06	G40031199010	10	19	1C03	G46006030000	10	28	1C03	G46496990250	13	27	1C08
G40015100610	13	65	1C09	G40031311055	10	17	1C03	G46012720000	11	34	1C04	G46496990260	13	28	1C08
G40015100615	13	66	1C09	G40036100014	13	54	1C08	G46016511000	10	11	1C03	G46496990270	13	29	1C08
G40020100008	10	23	1C03	G40036100019	13	52	1C08	G46062070010	12	7	1C06	G46496990280	13	30	1C08
		34	1C03	G40036100025	13	53	1C08	G46062104010	11	46	1C04	G46496990290	13	31	1C08
	11	4	1C04	G40036100045	13	55	1C09	G46062104040	12	4	1C06	G46496990300	13	32	1C08
		7	1C04	G40036500006	12	25	1C06	G46062370010	11	18	1C04	G46496990310	13	33	1C08
		16	1C04	G40036800012	11	17	1C04	G46062392000	12	12	1C06	G46496990320	13	34	1C08
		27	1C04		12	6	1C06	G46062392010	12	11	1C06	G46496990330	13	35	1C08
		33	1C04	G40040106005	13	43	1C08	G46062393000	12	5	1C06	G46496990340	13	36	1C08
	13	44	1C08	G40040106202	13	42	1C08	G46066043000	11	41	1C04	G46496990350	13	37	1C08
G40020100010	10	31	1C03	G40048109994	13	59	1C09	G46066070000	11	60	1C05	G46496990360	13	38	1C08
		12	1C06	G40048109998	13	58	1C09	G46066110000	11	59	1C05	G46496990370	13	39	1C08
G40020100012	12	10	1C06	G40052100110	13	49	1C08	G46172105000	11	53	1C04	G46496990380	13	40	1C08
G40020100014	12	21	1C06	G40052100140	13	50	1C08			56	1C05	G46496990390	13	41	1C08
G40020100016	10	6	1C03	G40052300450	10	12	1C03	G46376512000	10	3	1C03	G46496990400	13	45	1C08
G40020300010	13	51	1C08	G40080300035	11	36	1C04	G46492070000	10	20	1C03	G46496990410	13	46	1C08
G40025100010	13	57	1C09	G40100000015	11	21	1C04	G46492100000	11	58	1C05	G46496990440	13	48	1C08
G40026100006	11	9	1C04	G40100000016	13	68	1C09	G46492280000	11	57	1C05	G46496990450	13	56	1C09
		45	1C04	G40100000017	10	27	1C03	G46492300010	10	33	1C03	G46496990460	13	63	1C09
G40026100008	11	2	1C04		11	22	1C04	G46492330001	10	38	1C03	G46496990470	13	64	1C09
		13	1C04	G40100000060	10	22	1C03	G46492650000	11	8	1C04	G46666132000	11	40	1C04
		19	1C04	G40101008105	10	26	1C03	G46494950000	10	25	1C03	G46744290150	11	28	1C04
		25	1C04	G4010146005A	10	10	1C03	G46496011002	13	1	1C08	G46746230100	10	2	1C03
		31	1C04	G40160000616	11	11	1C04	G46496040022	11	43	1C04	G47022200010	11	48	1C04
G40026100010	13	71	1C09	G40160000830	10	35	1C03	G46496040600	11	52	1C04	G47276030000	12	3	1C06
	10	21	1C03	G40300000015	10	32	1C03			55	1C05	G48501081000	10	9	1C03
		29	1C03		13	62	1C09	G46496130000	11	42	1C04	106990-44660	6	22	1B08
G40026100012	11	67	1C05	G40329060000	11	35	1C04	G46496203000	10	5	1C03	114250-21290	5	10	1B07
		12	1C06	G40701121000	11	1	1C04	G46496990000	13	2	1C08	114270-01600	1	5	1B03
G40027100006	11	10	1C04	G40701121100	11	5	1C04	G46496990010	13	3	1C08	114770-61600	8	5	1B10
		61	1C05	G40705260000	12	2	1C06	G46496990020	13	4	1C08	124060-77680	6	25	1B08
		13	1C08	G40725221100	12	14	1C06	G46496990030	13	5	1C08	160110-92610	3	9	1B05
G40027100008	10	24	1C03	G40725260000	12	19	1C06	G46496990040	13	6	1C08	160110-92710	3	11	1B05
		11	1C04	G40850160100	10	4	1C03	G46496990050	13	7	1C08	160120-76940	8	10	1B10
		6	1C04	G40855220400	12	24	1C06	G46496990060	13	8	1C08			21	1B10
		14	1C04	G40905220400	12	22	1C06	G46496990070	13	9	1C08	160120-92700	3	10	1B05
		20	1C04	G40905260000	12	23	1C06	G46496990080	13	10	1C08	160260-78700	6	26	1B08
		26	1C04	G41400120200	10	7	1C03	G46496990090	13	11	1C08	160341-01950	9	25	1B11
		32	1C04	G41410020000	10	1	1C03	G46496990100	13	12	1C08	160393-55050	6	10	1B08
		49	1C04	G41410120000	10	8	1C03	G46496990110	13	13	1C08	160490-11010	2	7	1B04
	13	70	1C09	G41410120100	10	18	1C03	G46496990120	13	14	1C08	160490-11120	2	14	1B04

PART NO.	GRP. NO.	REF. NO.	LOC. NO.	PART NO.	GRP. NO.	REF. NO.	LOC. NO.	PART NO.	GRP. NO.	REF. NO.	LOC. NO.	PART NO.	GRP. NO.	REF. NO.	LOC. NO.
160490-11290	2	20	1B04	160510-14550	5	30	1B07	160710-55360	6	16	1B08				
160490-11300	2	21	1B04	160510-56610	7	13	1B09	160710-55370	6	17	1B08				
160490-11310	2	22	1B04	160510-56620	7	15	1B09	160710-55382	6	18	1B08				
160490-12500	4	3	1B06	160520-03050	2	1	1B04	160710-55390	6	19	1B08				
160490-12520	4	4	1B06	160520-07272	3	7	1B05	160710-56710	7	20	1B09				
160490-14200	5	11	1B07	160520-66291	8	22	1B10	160762-12050	4	2	1B06				
160490-14400	5	12	1B07	160530-21200	5	16	1B07	160769-56720	7	21	1B09				
160490-22010	5	20	1B07	160590-21210	5	17	1B07	160793-78010	9	32	1B11				
160490-22300	5	26	1B07	160610-03050	2	2	1B04	160810-21290	5	31	1B07				
160490-23030	5	28	1B07	160610-04201	2	5	1B04	160991-07260	3	6	1B05				
160490-45010	9	40	1B11	160610-04570	4	1	1B06	181130-56640	7	18	1B09				
160490-45140	9	1	1B11	160610-04620	2	6	1B04	181230-56380	7	24	1B09				
160490-45220	9	4	1B11	160610-12530	4	5	1B06	22252-000120	5	27	1B07				
160490-45230	9	3	1B11	160610-12540	4	6	1B06	22372-080000	8	11	1B10				
160490-45240	9	38	1B11	160610-12550	4	7	1B06	24101-062030	1	9	1B03				
160490-56011	7	1	1B09	160610-21290	5	18	1B07			16	1B03				
160490-56590	7	10	1B09	160610-55100	6	11	1B08	24311-000100	1	6	1B03				
160490-56600	7	11	1B09	160610-56630	7	17	1B09			13	1B03				
160490-59350	6	23	1B08	160610-56900	7	25	1B09	24311-000150	1	21	1B03				
160490-59360	6	24	1B08	160611-01740	1	19	1B03	26106-060082	9	22	1B11				
160490-66020	8	12	1B10	160611-14560	5	9	1B07	26106-060102	6	20	1B08				
160490-66190	8	25	1B10	160611-77250	9	23	1B11	26106-060162	5	32	1B07				
160490-66200	8	28	1B10	160664-07370	3	8	1B05	26106-060302	5	29	1B07				
160490-66211	8	29	1B10	160664-11100	2	12	1B04	26106-100162	1	7	1B03				
160490-76051	9	8	1B11	160664-11110	2	13	1B04			14	1B03				
160490-76251	9	9	1B11	160664-11180	2	15	1B04	26117-040088	8	18	1B10				
160490-76511	9	11	1B11	160664-66220	8	19	1B10	26117-040257	8	23	1B10				
160490-76580	9	19	1B11	160667-56151	7	26	1B09	26347-060002	8	24	1B10				
160490-76591	9	21	1B11	160667-56160	7	27	1B09	26366-060002	4	8	1B06				
160490-76600	9	20	1B11	160667-56750	7	22	1B09			12	1B06				
160490-76611	9	10	1B11	160670-66350	8	20	1B10		8	26	1B10				
160490-78090	9	27	1B11	160690-11221	2	17	1B04	26366-080002	9	24	1B11				
160490-78230	9	26	1B11	160690-11271	2	18	1B04	26376-120002	5	19	1B07				
160490-78540	9	28	1B11	160690-11280	2	19	1B04	26476-060142	2	23	1B04				
160490-78550	9	29	1B11	160690-61301	8	2	1B10		6	21	1B08				
160492-56520	7	3	1B09	160690-61311	8	3	1B10		9	2	1B11				
160492-56530	7	4	1B09	160690-61450	8	4	1B10			6	1B11				
160492-56540	7	5	1B09	160690-61600	8	6	1B10			7	1B11				
160492-56550	7	6	1B09	160690-76531	9	13	1B11			39	1B11				
160492-56570	7	8	1B09	160690-76540	9	14	1B11	26476-060202	1	18	1B03				
160492-56581	7	9	1B09	160690-76561	9	15	1B11	26476-060302	9	30	1B11				
160492-56610	7	12	1B09	160690-76570	9	16	1B11	28110-100120	3	12	1B05				
160492-56620	7	14	1B09	160690-76801	9	12	1B11	29610-000650	9	31	1B11				
160492-56630	7	16	1B09	160692-55300	6	13	1B08	29610-000950	9	36	1B11				
160492-66100	8	13	1B10	160692-56710	7	19	1B09	29610-001400	9	37	1B11				
160495-56561	7	7	1B09	160692-56770	7	23	1B09	760490-01500	1	10	1B03				
160495-56600	7	2	1B09	160692-66051	8	14	1B10	760490-01562	1	1	1B03				
160498-01330	2	4	1B04	160698-76580	9	17	1B11	760490-21700	5	13	1B07				
160498-13550	4	10	1B06	160699-11200	2	16	1B04	760490-22500	5	22	1B07				
160498-14050	5	1	1B07	160700-78040	9	33	1B11	760493-55700	6	1	1B08				
160510-02220	1	8	1B03	160700-78050	9	34	1B11								
		15	1B03	160700-78720	9	35	1B11								
160510-03180	2	3	1B04	160708-55150	6	12	1B08								
160510-13200	4	9	1B06	160710-55061	6	3	1B08								



**YANMAR AGRICULTURAL EQUIPMENT CO.,LTD.**

1-32, Chayamachi, Kita-ku, OSAKA 530-8321, JAPAN  
Tel:06-6376-6348